

## RESERVED TARGETS , Jul 13 2018

Table of coordinates

Cosmological fields	RA(J2000)	DEC(J2000)	Total reserve Area (arcmin <sup>2</sup> )	Corners
EGS figure 1	Center 14:20:00 AR1 14:21:20 AR2 14:20:30 AR3 14:18:30 AR4 14:19:20	Center 52:55:30 Dec1 53:04:00 Dec2 53:07:00 Dec3 52:47:00 Dec4 52:44:00	~ 5x20 = 100	1 = NW 2 = NE 3 = SE 4 = SW
WUDS	14:19:27	52:40:56	42.43x42.43 centred	
UDS figure 2	Center 02:17:25 <b>AR1 02:17:50</b> AR2 02:17:50 <b>AR3 02:17:00</b> AR4 02:17:00	Center - 05:12:30 <b>Dec1 -05:17:30</b> Dec2 -05:07:30 <b>Dec3 -05:07:30</b> Dec4 -05:17:30	12.5x7.5 = 93.8	1 = SW 2 = NW 3 = NE 4 = SE
ABEL 370 figure 3	Center 02:39:52	Center -01:34:39	7x7 = 14	~ 1 FOV

Figures

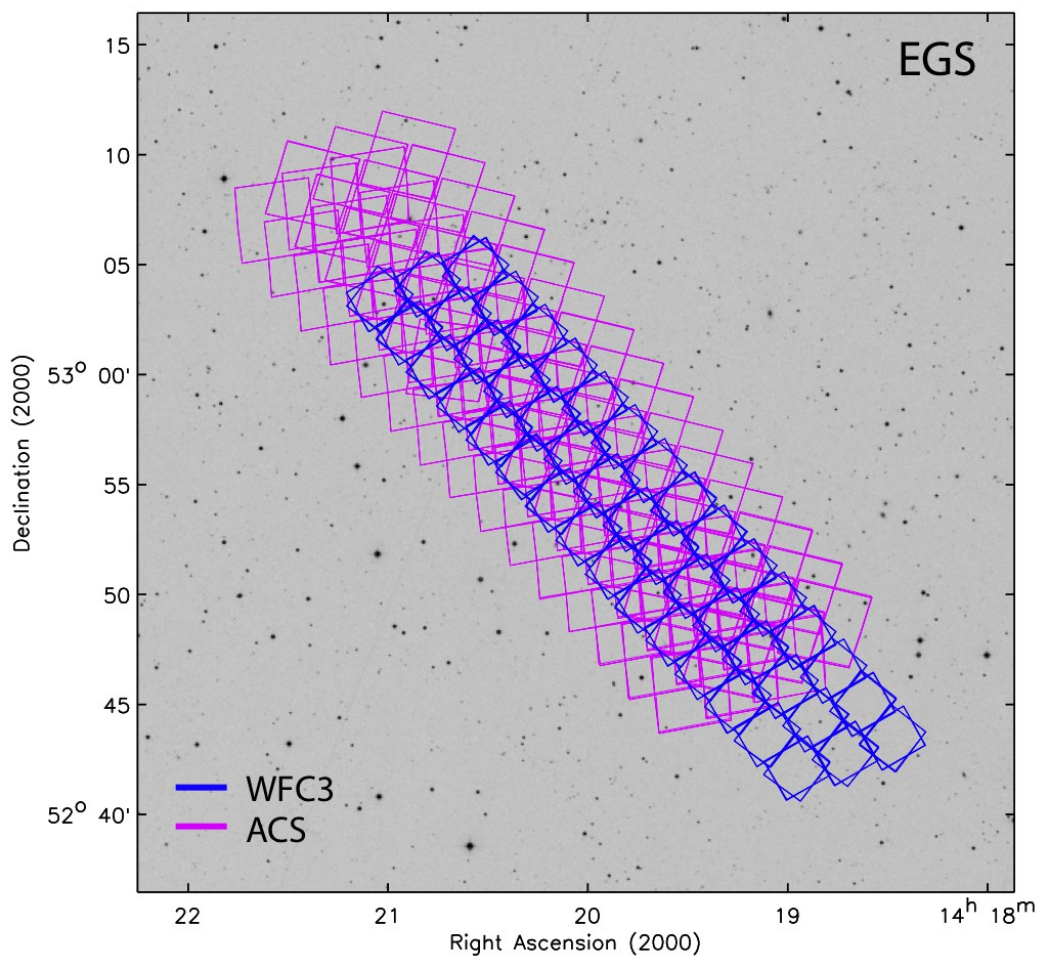


Figure 1. EGS (from [http://candels.ucolick.org/survey/Field\\_Maps.html](http://candels.ucolick.org/survey/Field_Maps.html))

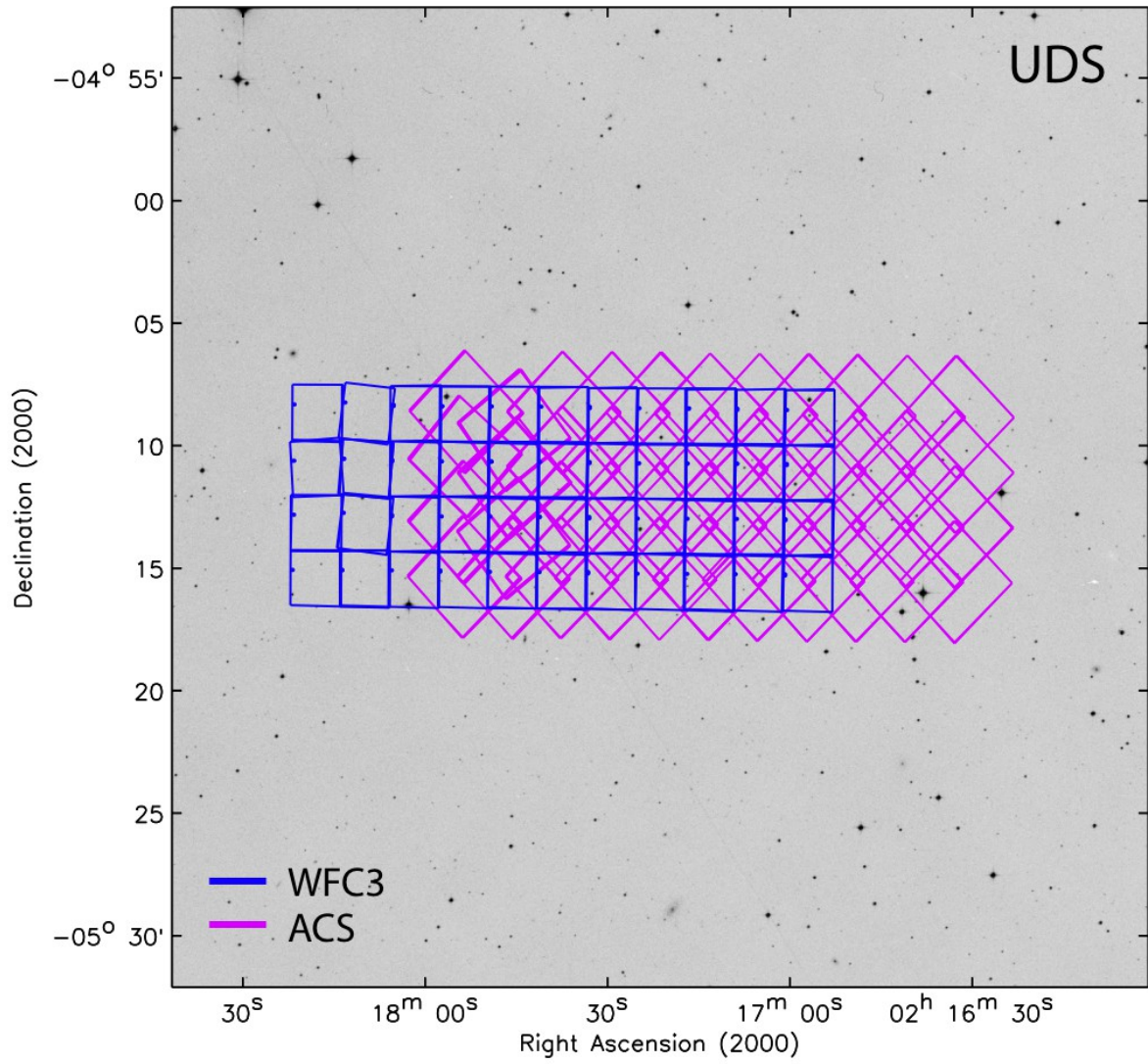


Figure 2. UDS (from [http://candels.ucolick.org/survey/Field\\_Maps.html](http://candels.ucolick.org/survey/Field_Maps.html))



Figure 3. ABELL 370 (from <https://www.spacetelescope.org/images/heic1711b/>)